

1.0 Inch Four-Digit Red LED Digital Counter, remote control wired inputs; PNP, Contact Closure, (NPN optional)

DC-10C-Term



Features

- Counts up to 9999
- 3 Terminal block connections for controls from PLC's, sensors, relays, palm switches, machine automation
- Momentary Contact Closure or PNP source (5-30VDC pulse)
- 3 Terminals: Increment, Decrement, Reset to zero
- Heavy duty 14Ga. all aluminum enclosure
- Case separates for field connections (3) 6-32 screws
- Large 1.0-inch super bright red LEDs
- Viewable up to 50ft.
- Factory serviceable
- Made in the USA

Options

- NPN input option
- Network or Wireless remote controls
- Redundant local sealed switches mounted on top
- Can supply power for sensors
- [See our many palm switches, relay & sensor options](#)
- [NEMA 4X,6,6P,12,12K,13 IP66, IK08 rated enclosure](#)
- Master-secondary redundant system
- 120 VAC 9 foot power cord
- POE power
- Customizable [contact us](#) or call 800-977-6872

Specifications

- **Input** (1) Increment, (1) Decrement, (1) Reset to Zero, 10ms response momentary contact closure, PNP sourced pulse (5-30VDC), 24VDC pulse
- **Display** Four-digit bar; high intensity; seven segment bar type; red LED display
- **Case** 14Ga. All aluminum enclosure, 6.75"W x 3.75"H x 3"D
- **Weight** 1.0 Pounds
- **Power Source** 2 Watts; 90 – 240VAC 50/60 Hz (12VDC @ 700 ma power supply, [PS-12-700](#)) or customer supplied 24VDC@500mA, (Terminal block connection included)
- **Operating Temp** 0° to 49° Celsius (32° to 120° Fahrenheit)
- **Case Finish** Fingerprint resistant, tough, black textured powder coating

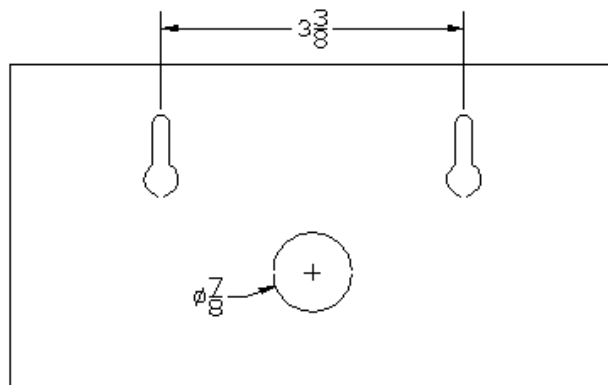
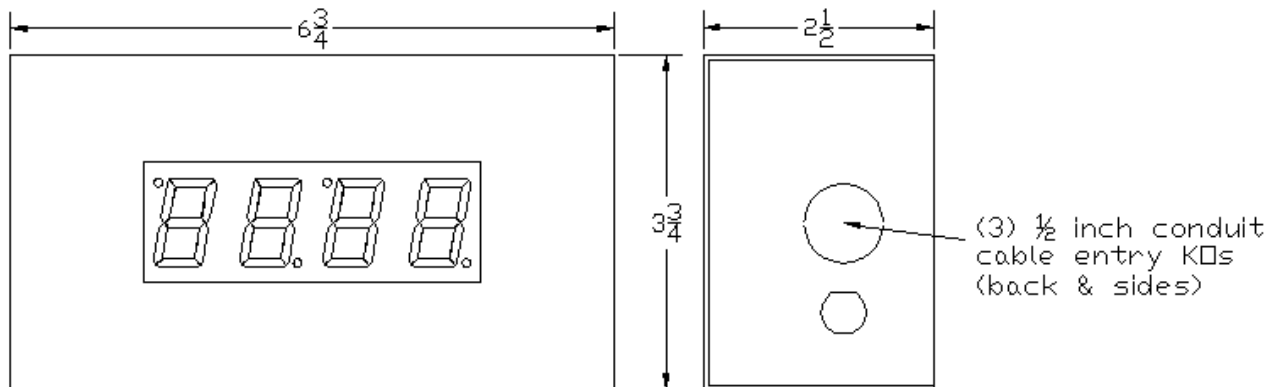
[DC-10C-Term](#) Description

The DC-Digital [DC-10C-Term](#) is designed to be used where a highly visible counter is needed. The flexibility of this unique design gives it a broad range of applications in industrial, government, medical, commercial and others. The Internal terminal blocks allow for hardwired controls from PLC's , switches, relays and or sensors that can provide a mechanical contact closure or an electronic PNP sourced electronic switch action (NPN optional). It can be used in either existing buildings or new construction. Long viewing distances are accomplished with its large red LED display. The all aluminum, black extra tough powder coated enclosure gives it a professional look that will hold up in many harsh environments.

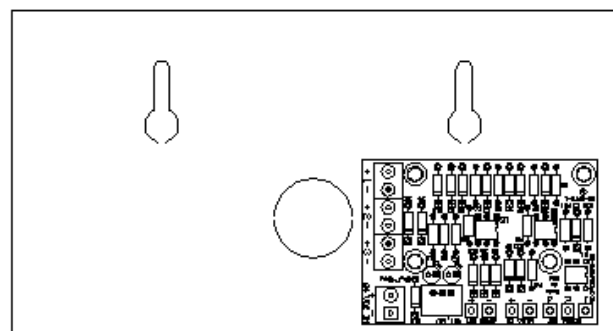
DC-10C-Term Mounting and Dimensions

There are (2) keyhole mounting knockouts for attachment to screws secured to a wall. Also supplied are 4 adhesive backed rubber feet that can be adhered to the enclosure bottom for table or Mount on a desk top.

DC-10 Enclosure



Back (inside)



3 input control terminals

Customer can supply (24VDC)

