

1.0 inch Four-Digit Red LED
Countdown timer with rotary set
switches and Foot switch activation
and High Output End of Period Tone

[DC-10T-DN-BCD-Foot-EOP](#)

DC-Digital
tm



Features

- Counts down from 99 mins to hundredths of a second
- Set and Forget Technology with BCD Rotary set switches
- Displays up to 100ths of a sec
- 1 year Warranty
- Foot Switch Activation for Reset and Start
- Heavy duty all aluminum enclosure
- Visible up to 50Ft
- Large 1.0 Inch Super Bright LED's
- Made in the USA
- Shift Digit Technology
- Factory Serviceable
- High Decibel Output adjustable Tone

Options

- Momentary push button switches
- Wired remote control
- Input redundancy, terminal block and switches
- 1-Switch for Start-Stop-Reset
- Nema 4X IP66, IK08 rated enclosure
- 24Vdc power
- Hours and minutes timing interval
- 100s of options call 800-977-6872

Specifications

- **Input** (1) Reset to set value and Start, Foot Switch ([DC-Foot-25](#)) momentary contact closure with 25 foot cable.
- **Display** Four digit bar; high intensity; seven segment; red LED display
- **Case** All aluminum enclosure, 6.75"W x 3.75"H x 3"D
- **Weight** 3.0 Pounds
- **Power Source** 2 Watts; 90 – 240VAC 50/60 Hz (12VDC @ 700 ma power supply, [PS-12-700](#))
- **Operating Temp** 0° to 49° Celsius (32° to 120° Fahrenheit)
- **EOP** 85-95 DB @ 10cm (adjustable) Tone
- **Case Finish** Finger Print Resistant, Tough, Black Textured Powder Coating

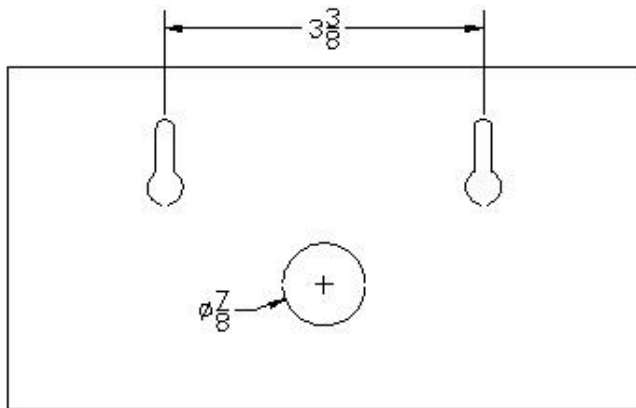
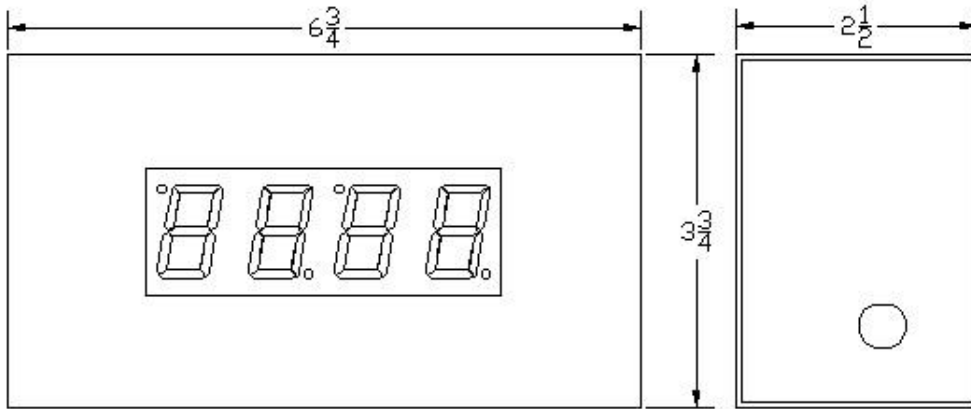
[DC-10T-DN-BCD-Foot-EOP](#) Description

The DC-Digital [DC-10T-DN-BCD-Foot-EOP](#) is designed to be used where a highly visible hands free countdown timer with a high audible end of period notification is needed. The [DC-10T-DN-BCD-Foot-EOP](#) utilizes the **shift digit technology** that allows the user to see the minutes as well as hundredths of a second. The flexibility of this unique design gives it a broad range of applications in industry, government, schools and churches. The Internal terminal blocks allow for easy connection. It can be used in either existing buildings or new construction. Long viewing distances are accomplished with its large red LED display. The all aluminum, black extra tough powder coated enclosure gives it a professional look that will hold up in many harsh environments.

DC-10T-DN-BCD-Foot-EOP Mounting and Dimensions

There are (2) keyhole mounting knockouts for attachment to screws secured to a wall. Also supplied are 4 adhesive backed rubber feet that can be adhered to the enclosure bottom for table or Mount on a desk top.

DC-10 Enclosure



Back (Inside)

