



## Instructions for operating and installing the DC-10T-DN Handwashing Timer

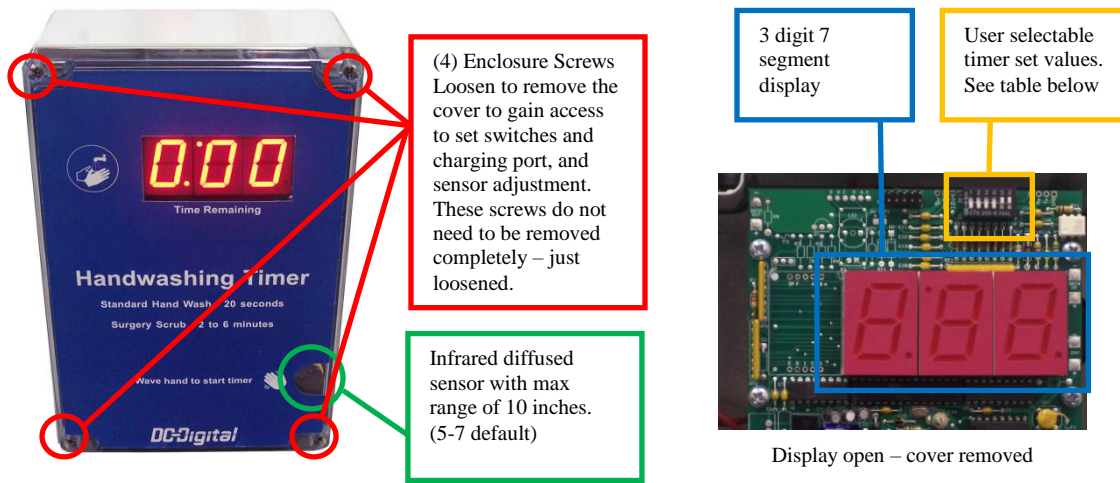


### Description:

- **The DC-10T-DN Hand Washing Timer is a battery powered 1.0 inch, 3 digit, red LED countdown timer with user settable time values and sensor triggered start housed in a NEMA 4X rated enclosure – proudly made in the U.S.A.**
- **Power:** This unit contains a 12V 5Ah sealed lead acid battery. (Battery charger sold separately). The battery is shipped fully charged.
- **Time Format:** User selectable via internal DIP switch settings.
- **Mounting:** Sink, table, or wall mountable with (4) .250 inch holes on the inside of the enclosure. See the mounting section at the end of this manual.
- **Viewable:** 25 feet / 7.62 meters
- **Enclosure:** NEMA 4x rated poly-carbonate enclosure (light gray RAL 7035) with a gasketed “tongue and groove” lid measuring 9.4 in L x 6.3 in W x 3.5 in H
- **Weight:** Approximately 6 lbs
- **Time base:** Crystal Oscillator (Factory calibrated  $\pm .0005$  pps @ 10MHz)
- **Controls:**
  - **User selectable time values:** Internal DIP switch settings – with the combination of the following: (Factory default is set for 20 seconds)
    - **4 Minutes**
    - **2 Minutes**
    - **1 Minute**
    - **30 Seconds**
    - **15 Seconds**
    - **5 Seconds**
  - **Timer activation sensor:** Infrared diffused reflective sensor with a max range of 10 inches. (Factory default comes 5 to 7 inches)
- **End of Period Audio Alert:** This unit comes with a 3 second end of period alert

# DC-Digital

## Controls:



User selectable DIP switch settings:

<u>Switch Number ON</u>	<u>Value added to the timer</u>
1	+ 4 minutes to the timer
2	+ 2 minutes to the timer
3	+ 1 minute to the timer
4	+ 30 seconds to the timer
5	+ 15 seconds to the timer
6	+ 5 seconds to the timer

Examples:

- 20 seconds: Switches 1, 2, 3, and 4 off. Switches 5 & 6 on.
- 2 minutes 30 seconds: Switches 1, 3, 5, and 6 off. Switches 2 and 4 on.

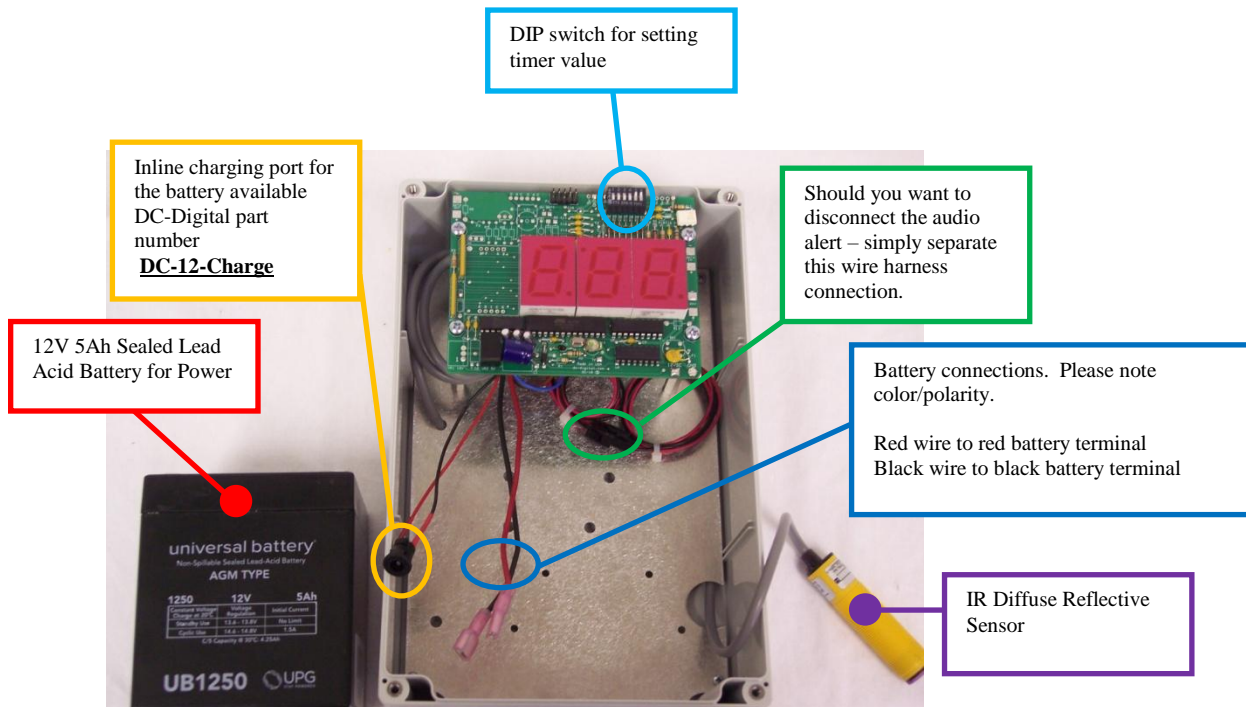
Maximum set time is 7 minutes 50 seconds (all switches on). If the timer is set to zero (all switches off) and the sensor is activated - the timer will flash the display once, sound a 1 second error “beep” and power down.

**Operation:** We recommend initial battery installation and set up to be done in a dry environment.

- Loosen the (4) enclosure screws to lift the cover from the body – allowing access to the inside of the timer.
- The sensor is anchored inside the enclosure using Velcro. Should you need to make any adjustment to the range – simply pull the sensor loose from the enclosure and locate the small slotted adjustment screw on the back of the sensor. Using a small slotted screwdriver, gently rotate the screw (right to increase the sensing range to a maximum of 10 inches, left to decrease the range). Factory default is 5-7 inches.

## Operation (continued):

- The 12V 5Ah batter is shipped outside the enclosure



- Please be attentive to the environment when charging the battery... the timer can operate normally while being charged, however, recommend removing the timer from any wet locations for safety.
- The battery is secured by Velcro, simply seat the battery into the enclosure so that the Velcro of the battery is pressed into the that of the enclosure.
- Once the timer is charged, timer value set, and sensing distance configured – reattach the enclosure lid by tightening the (4) corner screws.
- Wave your hand in front of the sensor - the timer should make an “acknowledge beep” and display the time set via the DIP switch. While the timer is decrementing any additional sensor input will be ignored.
- The unit cannot be reset once the timer has begun decrementing.
- When the timer reaches 0:00, a 3 second end of period beep will sound alerting the user that it has reached the end of the countdown.
- At the end of the audio alert, there is a 5 second lockout window where the display is off but the sensor will not trigger the timer to restart. This is to allow the person(s) to remove their hands from the sink and out of the way of the sensor if necessary.

## Battery Charge Expectancy:

- We recommend charging the battery after 20,000 cycles or 3 weeks – whichever comes first.



Remove the enclosure lid to gain access to these (4) .250 inch holes. This allows the unit to be mounted to a surface and still be protected by the gasketed enclosure lid.

**Mounting:** See photo above.

Thank you very much for choosing DC-Digital for your timing needs. For further questions please contact us here at DC-Digital:

Call us: 800-977-6872

Email us: [info@dc-digital.com](mailto:info@dc-digital.com)

Or visit our website: [www.dc-digital.com](http://www.dc-digital.com)